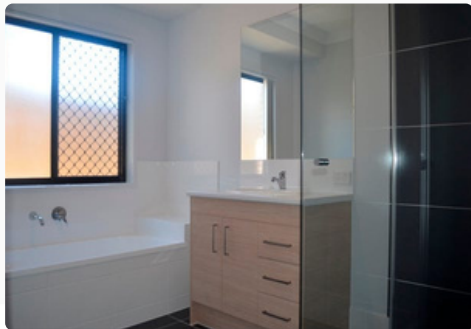


# MODERN SIL HOME

Available Now



## HOUSE FEATURES



3 Private  
Bedrooms



3 Ensuite  
Bathrooms



Large Open  
Plan Kitchen



2 Large  
Living Rooms



Garage  
Parking



Spacious  
Outdoor Living  
Area

## PROPERTY OVERVIEW

This spacious and modern SIL home located in a quiet neighborhood of Griffin is perfect for relaxed living. With ensuite bathrooms, built in wardrobes, and air conditioning you are sure to feel comfortable in this home.

Conveniently located to beautiful nearby parks, rivers, and only 4.2km from Westfield North Lakes, this home is ideal for serene everyday living.

ENQUIRE NOW



[stjudes.com.au](http://stjudes.com.au)



[hello@stjudes.com.au](mailto:hello@stjudes.com.au)



(07) 3924 5656